

千葉県教育長期ビジョンの体系

The System of the Long-Term Education Vision in Chiba Prefecture

基本理念
Basic Philosophy

県民一人一人が、生涯を通して、「学ぶ喜び」を感じながら「次代をひらく力」を培うことのできる
学習環境の実現

To realize a learning environment where each citizen of Chiba Prefecture can foster "the power to create the next generation" always feeling "enjoyment in learning" throughout the lifetime.

基本目標 Basic Objectives

県民一人一人が安心して住み、能力を発揮できる地域コミュニティづくり

To create a local community where each citizen of the prefecture can live at ease and display their ability.

児童生徒が基礎・基本を習得し、個性を伸ばすことのできる学校教育環境づくり

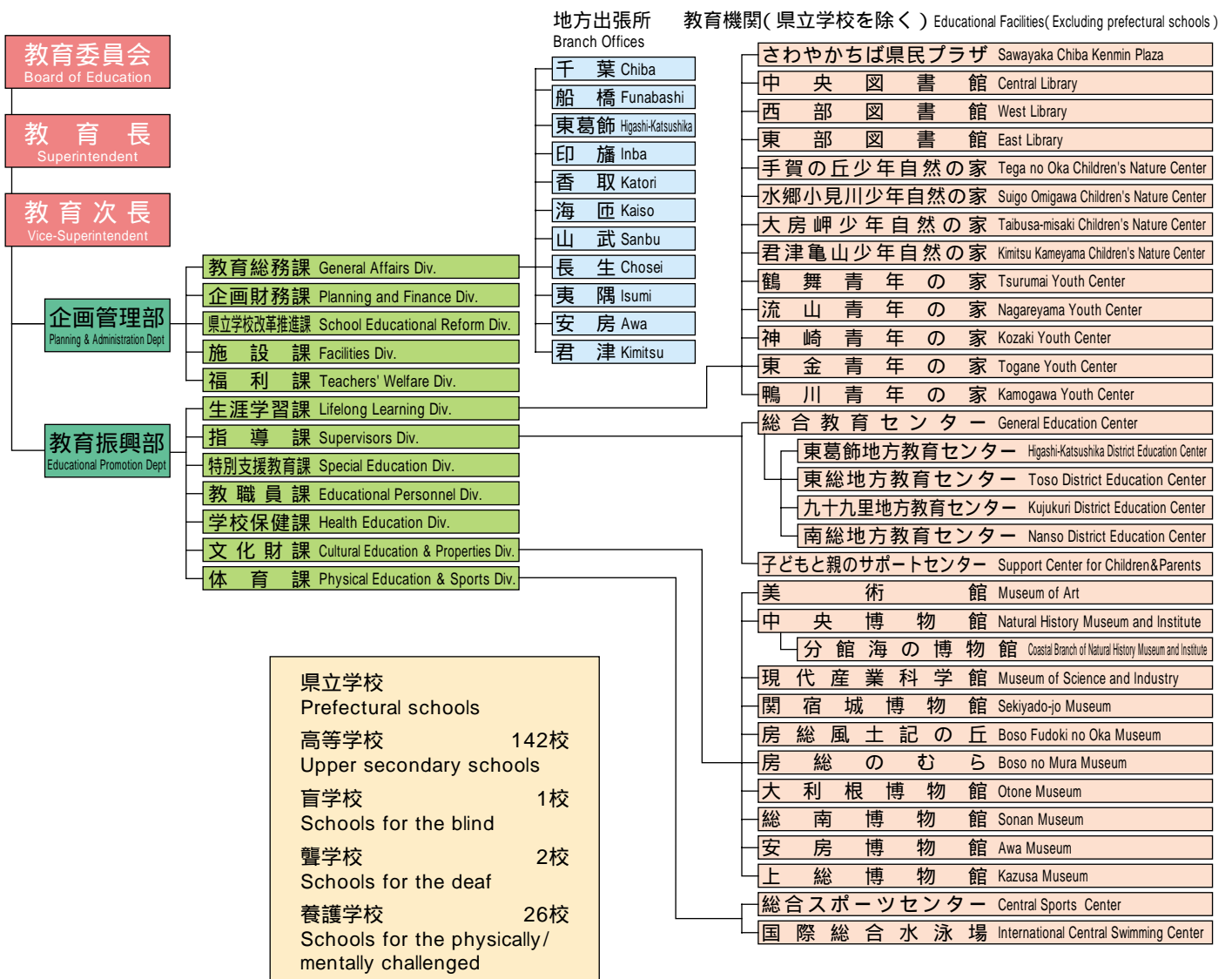
To create a school education environment where each pupil can learn basic concepts and principles and show their individual characters.

一人一人がライフスタイルに応じて自己表現を目指すことのできる学習環境づくり

To create a learning environment where each citizen can aim at realizing their self-expression depending on their respective lifestyle.

県教育委員会の組織 (平成15年4月1日現在)

Organization of the Prefectural Board of Education (April 1, 2003)



千葉の教育 “夢・未来2025”

With the slogan
"YUME,MIRAI 2025(Dream and Future 2025)"
as a goal of Chiba's education.

ひろげよう 学校・家庭・地域を結ぶ教育の輪

Let's strengthen the educational link connecting schools, families, and communities.

実現に向けての基本テーマ

Basic Themes for realization

- 1 学校、家庭、地域社会がそれぞれの役割を果たしながら一体となって教育力を高める
Schools, families, and local societies as a whole promote the educational power by performing their respective roles.
- 2 地域の風土・文化を継承し、郷土愛や地域への誇りと愛着を育むとともに、異文化理解を深める
They inherit local traditions and culture, foster a loyal spirit to their native land and the pride and love of their local communities, and deepen their understanding of other cultures.
- 3 ともに暮らし、ともに学ぶ学習・教育活動を進める
We promote learning and educational activities with the goal of living and learning together.
- 4 生涯を通じて楽しみと喜びのある学習活動を推進する
We promote the lifetime learning activities for citizens' pleasure and enjoyment.
- 5 ゆとりのある教育活動の中で、基礎・基本の確実な定着と個性を生かす学校教育を目指す
In the educational activities full of latitude, we aim for school education that enable pupils to learn basic concepts and principles and to show their individual characters.
- 6 豊かさや自己実現を得ることのできるスポーツ・文化活動を推進する
We promote sports and cultural activities that enable citizens to obtain their spiritual satisfaction and self-expression.
- 7 県民の体力の維持向上と健康の保持増進に努める
We encourage prefectural citizens to preserve and promote their physical strength and health.
- 8 学習と教育を担う人々を養成し支援する
We train and support persons in charge of learning and education.
- 9 県民の学習ニーズに対応した学習・教育基盤の整備と、学習・教育環境のネットワーク化を推進する
We promote the establishment of learning and educational infrastructures and the networking of learning and education environments to meet the citizens' learning needs.

県教育委員会所管事項

Organization of the Prefectural Board of Education

企画管理部 Planning and Administration Department

教育総務課 General Affairs Division

教育委員会会議、広報・広聴、情報公開、人事、給与、文書、法規、公益法人、防災連絡

Board of Education meetings, public relations, public hearings, information disclosure, personnel affairs, wages, documents, regulations, public service corporations, emergency information diffusion system

企画財務課 Planning and Finance Division

予算、給与支給、教職員給与費・公立義務教育諸学校の国庫負担、財務事務の指導、教育施策の企画・策定、教育に関する諸計画の総合調整、調査統計

Budgeting, paying of wages, defrayment of compulsory education expenses and staff salaries out of the national treasury funds, guidance in financial affairs, planning and deciding educational policies, overall coordination of various educational projects, research and statistics

県立学校改革推進課 School Educational Reform Division

県立高等学校再編計画の策定・実施、県立高校の設置、学科改編、中高一貫教育

Planning and implementation of prefectural high school reorganization, foundation of prefectural high schools, curriculum renovation, through education of middle and high schools

施設課 Facilities Division

県立学校の建設工事・施設整備・国庫負担、教育財産の取得・管理・処分

Construction and maintenance of prefectural schools, application for state subsidies, acquisition, management and disposal of educational property

福利課 Teachers' Welfare Division

公務災害、退職手当、恩給、教職員住宅、共済組合、互助会、福利厚生

Accident compensation, retirement allowances, pensions, staff housing, mutual aid association, friendly society, welfare

教育振興部 Educational Promotion Department

生涯学習課 Lifelong Learning Division

社会教育の振興、社会教育施設の設置・運営、社会教育関係団体の育成、社会教育指導者の育成・指導、生涯学習の振興

Promotion of community education, establishment and operation of community education facilities, fostering organizations and groups for social education, training and guidance of social education leaders, promotion of lifelong learning

指導課 Supervisors Division

教育課程、学習指導、生徒指導、教科書、研修、入試、公立幼稚園、進路指導、人権教育、国際理解教育、情報教育

Education programs, education-related guidance, student advising, textbooks, training, entrance examinations, public kindergartens, career guidance, human rights education, education for international understanding, mass-media education

特別支援教育課 Special Education Division

特殊教育の教育課程、学習指導、盲・聾・養護学校への就学事務、不登校傾向等の児童・生徒の適応指導

Special education curriculum, study guidance, enrollment procedures to schools for the blind, the deaf, and the handicapped otherwise, rehabilitation guidance for children who are inclined to refuse school attendance

教職員課 Educational Personnel Division

県立学校及び公立義務教育諸学校の学級編制・人事、教員免許、県立学校の管理運営

Class organization and personnel administration at prefectural schools and public schools for compulsory education, teachers' license, prefectural schools' administration and operation

学校保健課 Health Education Division

学校保健、学校安全、学校給食、保健学習指導、学校医・学校歯科医・学校薬剤師

Health and safety in schools, school lunches, health study guidance, appointment of school doctors, dentists and pharmacists

文化財課 Cultural Education and Properties Division

文化財の保護・指定、博物館の運営・登録

Protection and designation of cultural properties, museums' operation, registration and guidance

体育課 Physical Education and Sports Division

体育学習指導、社会体育・国際スポーツの振興、体育大会・競技会の指導、体育施設の整備、高校総体開催準備

Physical education guidance, promotion of and guidance in social physical education, domestic and international sports meets and competitions, maintenance of sports facilities, preparation for All-Japan High Schoolers Athletic Meet